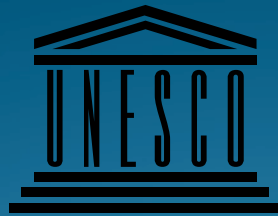


Tsá Tué International Biosphere Reserve



United Nations
Educational, Scientific and
Cultural Organization



• Tsá Tué
• Biosphere Reserve
•
•

Arctic Biodiversity Congress
October 9-12, 2018
Rovaniemi, Finland

Presentation Overview

- What is a “biosphere reserve”?
- Where is the Tsá Tué Biosphere Reserve?
- How did this designation come about?
- Why is it important?
- Current status
- Next steps
- Challenges and opportunities
- Questions



United Nations
Educational, Scientific and
Cultural Organization



Tsá Tué
Biosphere Reserve

Where is the Tsá Tué Biosphere Reserve?

(one of these is not like the others)



United Nations
Educational, Scientific and
Cultural Organization



Tsá Tué
Biosphere Reserve

What is a “biosphere reserve”?

- UNESCO/MAB designation – with outdated terminology
- Not a regulatory overlay
- Does not formally establish a new conservation area
- Instead, recognition by UNESCO of exemplary demonstration of sustainable development – “a gold medal” for what has been achieved and encouragement to do more

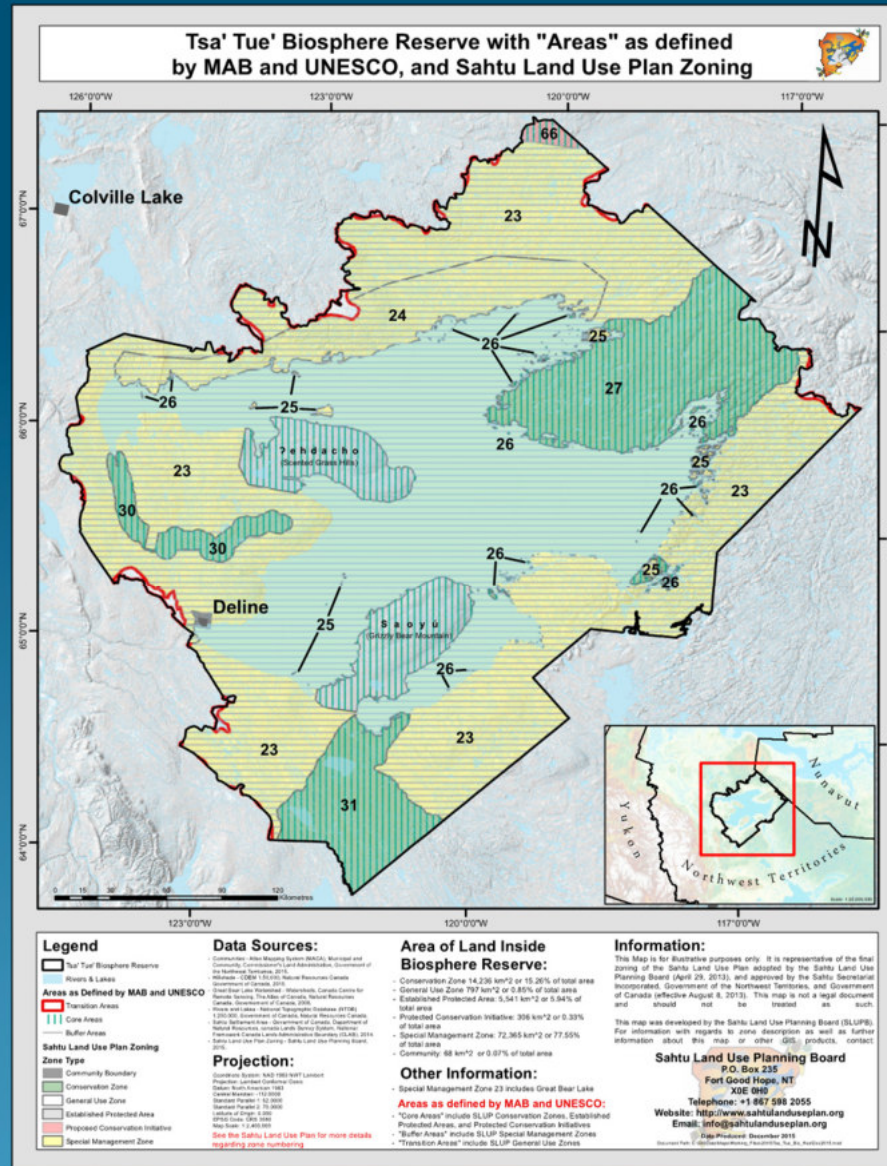


United Nations
Educational, Scientific and
Cultural Organization



Tsá Tué
Biosphere Reserve

A more detailed look....



- Tsá Tué
- Biosphere Reserve

How did this come about?

Led by the Elders, supported by the leadership

- Foundation: Yamoria
- Building Blocks:
 - Sahtu Dene and Metis Final Comprehensive Land Claim Agreement
 - Great Bear Lake Watershed Management Plan (the “Water Heart”)
 - Sahtu Land Use Plan
 - Délı̨nę Final Self Government Agreement



What's the significance?

Regaining sovereignty through stewardship

- First (and only, to date) biosphere reserve championed from the outset by its Indigenous residents
- Strengthens Déłı̄nē's sovereignty
- International recognition of Déłı̄nē's approach to environmental stewardship – lessons for the NWT and well beyond
- Largest in Canada and one of the largest internationally (1/4 the size of Finland), the only one in Canada's Arctic and one of a few in the circumpolar Arctic
- Enables Déłı̄nē to learn and to lead
- Opportunities for economic development

Where are we now?

- Tsá Tué Biosphere Reserve Stewardship Council
- Biosphere reserve office and staff in place
- Research and monitoring priorities established, some research underway, more planned
- Guardian Program under development
- Cooperative programs with Parks Canada in place and planned



United Nations
Educational, Scientific and
Cultural Organization



Tsá Tué
Biosphere Reserve

Where are we headed?

- Evolving relationship with Déłı̄nē self-government bodies
- Self-sustaining Stewardship Council
- Comprehensive research and monitoring program
- Core funding and capacity building
- Strengthen/establish linkages with other biospheres
- Tourism and other economic development opportunities



United Nations
Educational, Scientific and
Cultural Organization



Tsá Tué
Biosphere Reserve

Community Research and Monitoring Priorities

main driver: climate change

- Contaminants
- Wildlife
- Water quality and quantity change
- Terrain and land cover change
- Fisheries and aquatic ecology
- Conservation and cultural areas
- Socio-economics and governance

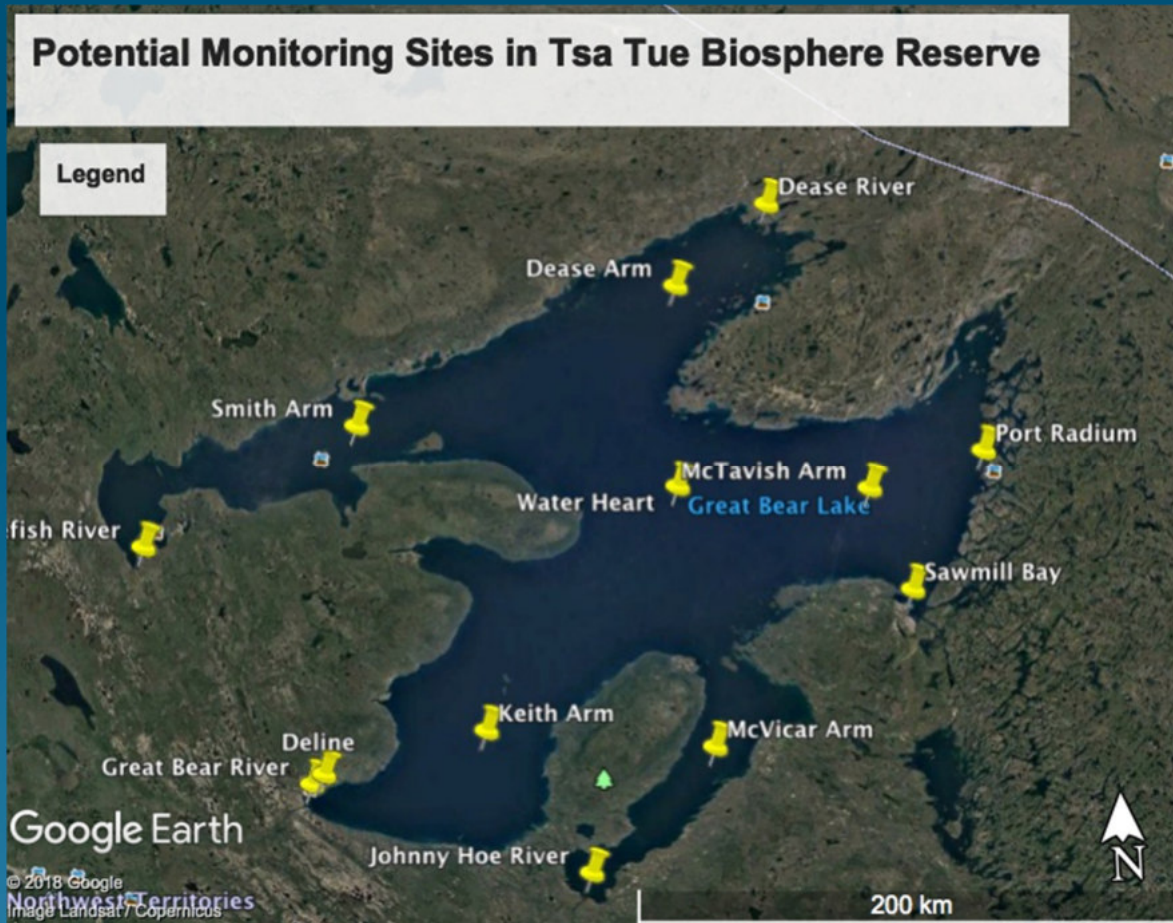


United Nations
Educational, Scientific and
Cultural Organization



Tsá Tué
Biosphere Reserve

Potential Monitoring Sites



United Nations
Educational, Scientific and
Cultural Organization



• Tsa Tse
• Biosphere Reserve

Challenges and Opportunities

Challenges

- Funding
- Capacity
- Training and education
- Overall sustainability of biosphere administration

Opportunities

- Funding
- Capacity
- Training and education
- Economic development through tourism, research and monitoring

Some photos.....



Kuba Bakowski







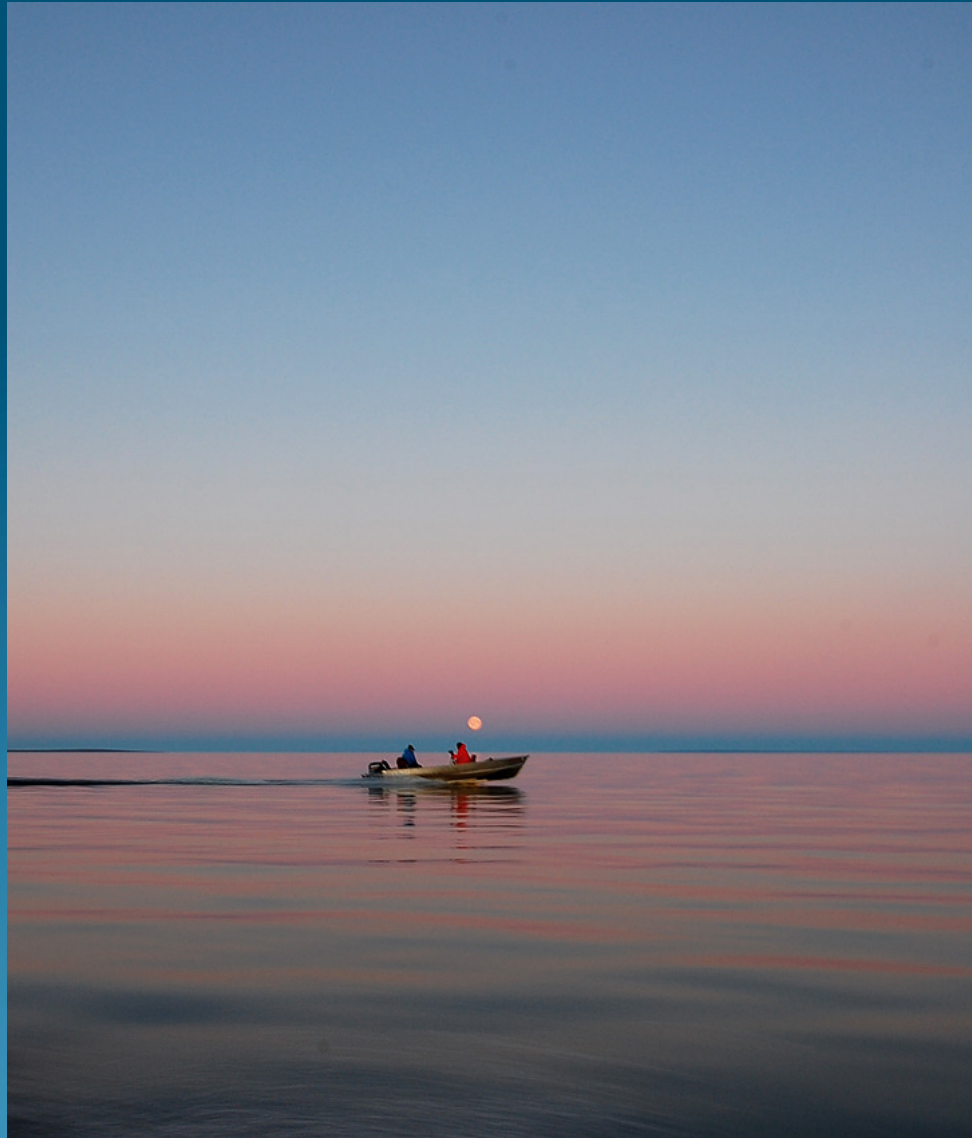


Pat Kane



Paul Vescei





Paul Vescei



Pat Kane





Fritz Mueller/Parks Canada



Fritz Mueller/Parks Canada





Paul Vescei

Thanks!

Contacts:

- David Livingstone

livingstone21@hotmail.com

- Websites: tsatue.ca
deline.ca

- Coordinator: Gina Bayha

tsatue@biosphere.gov.deline.ca



QUESTIONS?



United Nations
Educational, Scientific and
Cultural Organization



Tsá Tué
Biosphere Reserve