

A participatory approach to reducing the poaching of Bewick's Swans in the Russian Arctic

Julia Newth¹, Sergey Uvarov², Sergei Kanyukov², Anna Belousova³, Eileen Rees¹, Sacha Dench¹ & Petr Glazov⁴

¹Wildfowl & Wetlands Trust / University of Exeter, UK

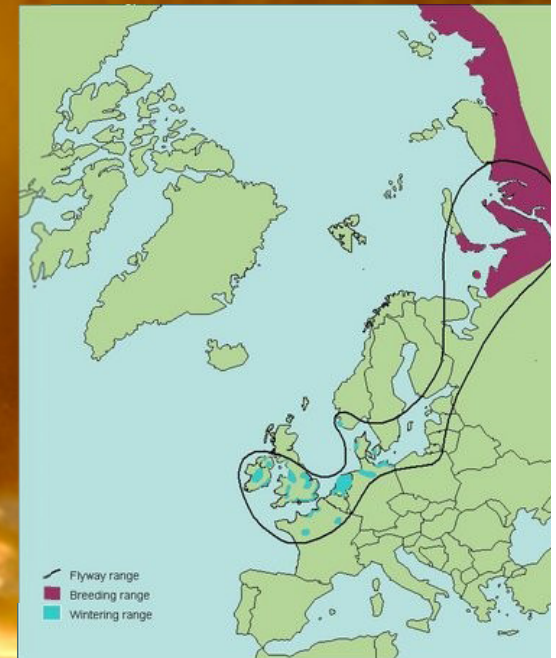
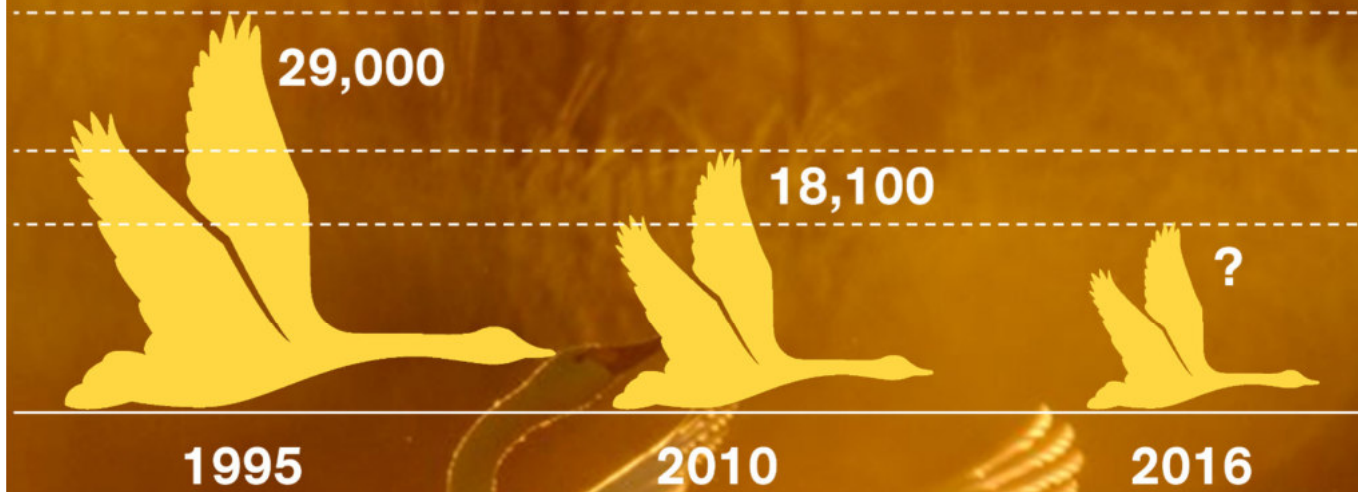
²"Green Home", NAO, Russia

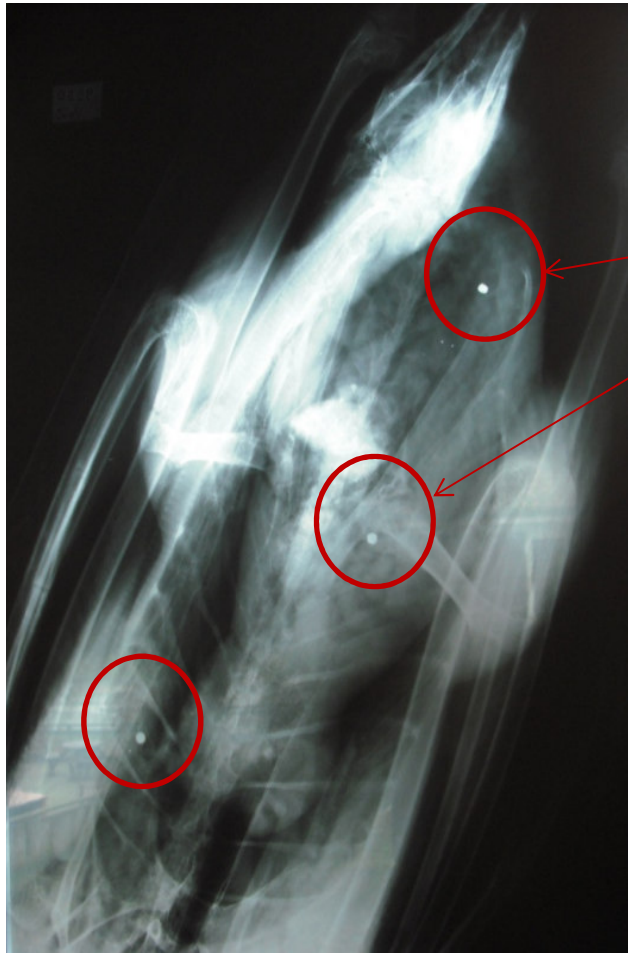
³Russian Research Institute for Environmental Protection, Russia

⁴Institute of Geography, Russian Academy of Sciences, Russia

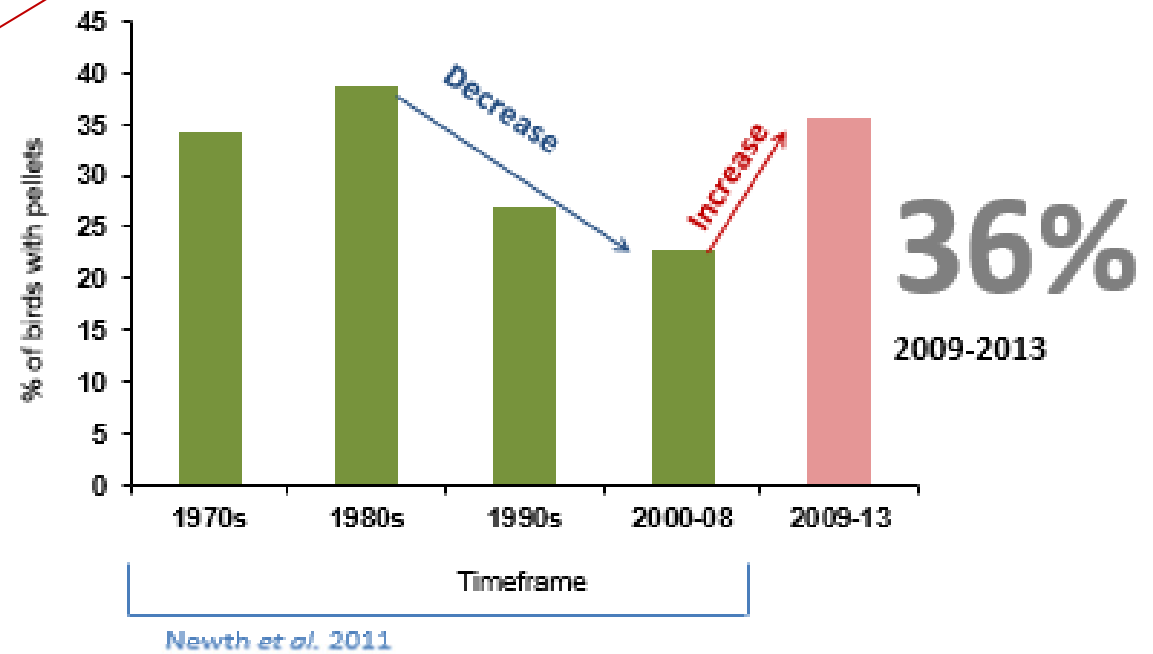


DECLINE OF BEWICK'S SWAN IN EUROPE





shotgun pellets



Illegal hunting

WHERE?

Wintering sites?

Breeding grounds?

Staging sites?

WHO & WHY?



Knowledge gaps



Working with communities in Russia

91% - “It is important to maintain Bewick’s swans for future generations”

79% - “I like Bewick’s swans”

78% “Bewick’s swans are an important part of the arctic landscape”

Photo: WWT

Source: EthnoExpert

26% admitted to hunting a Bewick's swan in the previous three years
(15% of those accidentally)

35% knew someone who had hunted a Bewick's swan in
the previous three years

33% believe that Bewick's swans
are hunted near their village

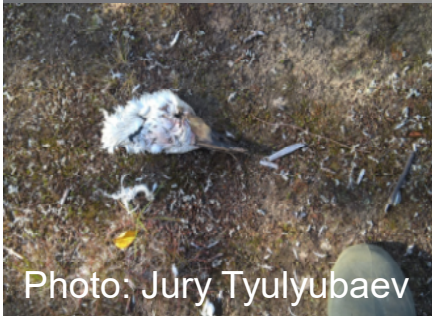


Photo: Jury Tyulyubaev

Source: EthnoExpert



Hunting activity/perceptions

Misidentification of species



Whooper Swan




Bewick's Swan

Mute Swan

14% could
identify a
Bewick's swan



Accidental shooting?

- 
- ❖ Numbers increasing/too high (86% agreed)
 - ❖ Lack of enforcement of protective laws (56%)
 - ❖ Swans arriving in hunting season (54%)
 - ❖ Negative impact on breeding waterbirds (51%)
 - ❖ Food (42%)
 - ❖ Sport (32%)
 - ❖ Unaware that they are protected (32%)

Source: EthnoExpert





Swan Champion Workshop, Nar'Yan-Mar 2018

Swan Champions

Members of the Swan Champion Project include: the Nenetskiy Zapovednik; Association of the Nenets People “Yasavey”; The Norwegian Barents Secretariat; Nenets local history museum; Historical, Cultural and Landscape Museum-Reserve “Pustozersk”; Federal Research Center for Comprehensive Arctic Studies of the Russian Academy of Sciences (Arkhangelsk); Committee for Tourism of the Nenets Autonomous Okrug; “Green Home”; Russian Research Institute for Environmental Protection; Institute of Geography - Russian Academy of Sciences; Center for Natural Resources Management and Environmental Protection; “Close Arctic”; Recreation Hanavjej hsia Camping; Krasniy gorod and the Wildfowl & Wetlands Trust (WWT, based in the UK).

The group is co-ordinated by **Sergei Kanyukov** from “Green Home”



Collaborative partners

Knowledge exchange



Ecology, species identification, protective laws, penalties for violating laws, waterbird hunting permits, how to report ring sightings

- **Hunters – inhabitants**
- **Hunting tourists**
- **General public**
- **School children**
- **Regional government**



Swan Champion Network



Graphic: Sonia Rozenfeld

1. КАКОГО ЦВЕТА ЛЕБЕДЬ?

Белый – пункт 2

серый / коричневатый – пункт 3

Сложно сказать – виден только силуэт – пункт 4

2. КАКОГО ЦВЕТА У НЕГО КЛЮВ?

Желтый и чёрный – это ЛЕБЕДЬ-

КА ДЛИНЕ

ОГО, ЧЕМ

ОНА ВМЕСТЕ С

то взрослые особи,

разных видов очень
похожи, это может
помочь.

ОБЕ НОГИ?

ли вист

Определить по силуэту, к
то лебедь, довольно сложно.
похожи, это может помочь
лебеда.

8. Иногда сложно различить малого лебеда и
кликун. Кликун крупнее, с более длинной шеей.



МАЛЫЙ (ТУНДРНЫЙ) ЛЕБЕДЬ

Маленький, с более
короткой шеей. Чёрный клюв
крупнее, чем у лебеда.
Грифельный клюв и
чёрный затылок.

прослушать



ЛЕБЕДЬ-КЛИКУН

Их клюв больше, чем у лебеда, и
грифельный. Чёрный
близко к носу. Форма головы
увеличена, более зловещая,
чем у лебеда.

прослушать



ЛЕБЕДЬ-ШИПУН

Самый крупный из 3 видов лебедей,
с красной-оранжевой
крупнее и с чёрным
широким
взрослым в



Resources for hunters



Nikolai Grigoryevich Vilk from Ilelbs community



Collaborative science

ЭКОЛОГИЯ
24-08-2018, 12:02

Автор
Андрей Торопов

В НАО РОССИЙСКО-БРИТАНСКОЙ ЭКСПЕДИЦИИ УДАЛОСЬ ПОЙМАТЬ И ОКОЛЬЦЕВАТЬ 74

Об этом британские учёные рассказали на пресс-конференции, прошедшей в На...



YouTube



Swans in the Media

Naming swans after communities

Mezen (ringed USY)



Inspiring swan champions



Photo: Nenetskiy Zapovednik



Learning programme



Swans in Art



Home About Us The Swans Projects News Events Resources



The Swan Champion Project involves a collective of concerned individuals in the Nenets Autonomous Okrug and Arkhangelsk Oblast, representing the interests of conservation, tourism, hunting, education, native peoples and government. These 'Swan Champions' aim to design and implement activities that celebrate Bewick's swans and their unique tundra habitat and reduce the hunting of swans and other protected waterbirds. Sergei Kanyukov from "Green Home" co-ordinates the project which is also supported by the Wildfowl & Wetlands Trust.

Проект «Лебединый защитник» включает коллектив заинтересованных лиц в Ненецком автономном округе и Архангельской области, представляющих интересы охраны окружающей среды, туризма, охоты, образования, коренных народов и органов власти. Эти лебединые защитники нацелены на разработку и осуществление мероприятий, которые информируют о малом лебеде и его уникальной тундровой среде обитания, сокращают охоту на лебедей и других охраняемых водоплавающих птиц. Сергей Каныков из общественной организации «Грин Хоум» координирует проект, который также поддерживается Трестом водоплавающих и водно-болотных угодий.



Заповедник
"Ненецкий" Federal
Nature Reserve
"Nenetskiy"

@nenetzap

Home

About

Photos

Videos

Posts

Community

Info and ads

Create a Page



Liked Following Share

Send Message

Posts



Заповедник "Ненецкий" Federal Nature Reserve
"Nenetskiy"

13 September at 12:53

Несколько дней назад все наши коллеги дружно поддержали призыв ограничить запусков воздушных шаров на мероприятиях. И мы тоже его поддерживаем, ведь каждый год мы отмечаем последствия таких опрометчивых поступков на наших арктических островах.

Но Баренцево море приносит нам и другие "дары цивилизации". Периодически в наших постах мы будем выкладывать наши находки.

Сегодня - обувные новинки 2018 года (фотографии с небольшого участка береговой линии заповедного острова Матвеев)

See Translation

Community

See all

Invite your friends to like this Page

897 people like this

735 people follow this

Matthew Price and 15 other friends like this

About

See All

ул. Монтажных, 15Б
166700 п.Искателей

+7 818 534-81-19

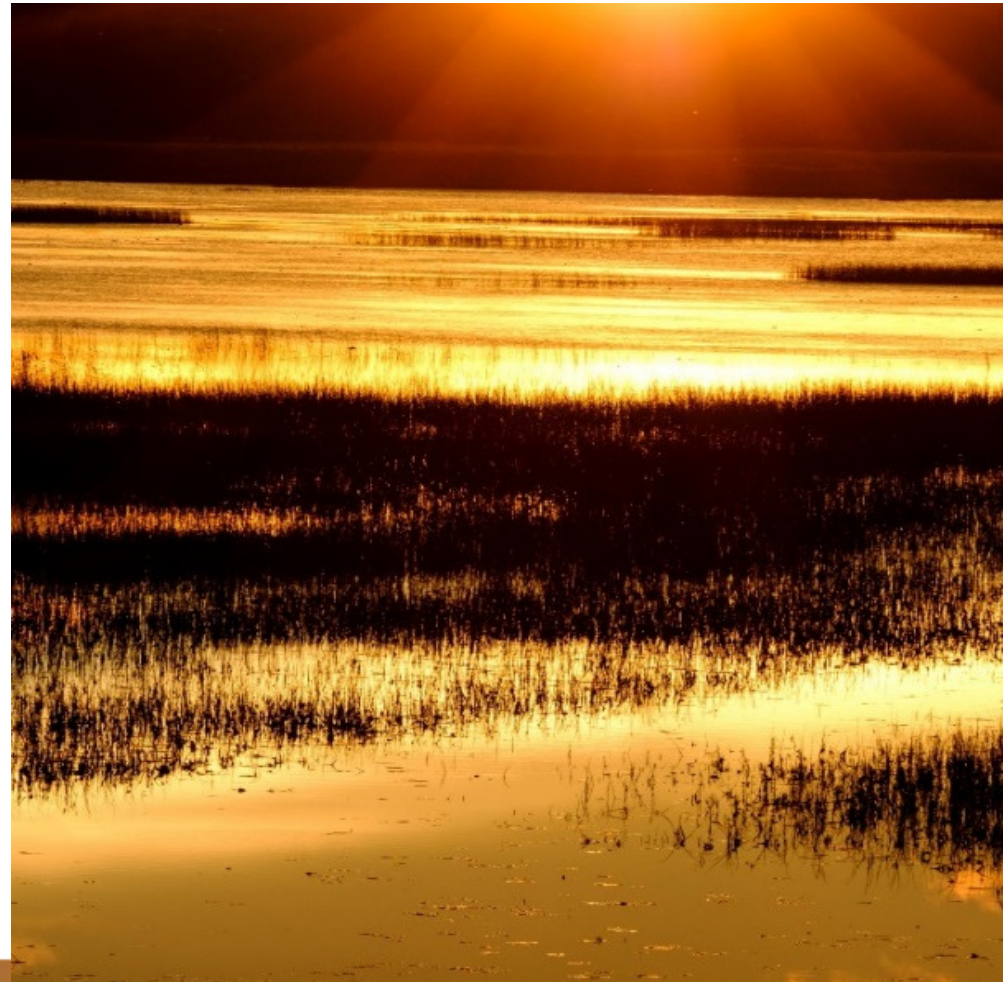
Typically replies within a few hours
Send message

www.nenetz.ru



Swans Online <http://www.swansg.org/projects/swan-champion-project/>

- Measure changes in illegal hunting
- Measure increased knowledge among hunters (related to behaviour and behavioural intention)





FLIGHT OF
THE SWANS





51

activities in
10 countries

700+

articles published
internationally

340+

International TV &
radio appearances

6

conservation
workshops



650+

UK TV & radio
appearances



Photo: G. Mikhailova

Community-led project

Championing swans, migratory birds, wetlands

Uniting community leaders to help secure future of shared and valued tundra ecosystem and its wildlife

Information exchange between the public and conservationists

Russia leading the way

Can you help support this initiative?



In Summary

*“The **Nenets Autonomous Okrug** is a key territory in the preservation work of the North-West European population of Bewick’s swan. The **Swan Champion** project is intended to unite scientists, hunters and the public at large in a common task to prevent the disappearance of these beautiful and graceful birds.”*



Stanislav Zolotoy, Head of the Nenetskiy State Reserve

*“Always the Northern minority peoples living in the Arctic conditions considered the **observation of the environment as a basis of survival**. They have accumulated a huge baggage of **traditional knowledge** noting, adopting the habits and behavior of the surroundings. It helps them to survive in harsh conditions. They never tried to conquer the environment but tried to decorate it with their presence.*

*They were **amazed by swan’s beauty, grace and composed legends watching the swan**. This bird has become a symbol of devotion to her own land, family and children. The swan is an example of firmness and courage in protecting their breed from predators. **Thus, swan have earned respect and veneration among the Northern peoples.**”*



Vladislav Viucheiskiy, Head of the Reindeer Herders Union (Nenets Autonomous Okrug)

Thanks for listening!



Photo: WWT

julia.newth@wwt.org.uk