

The Arctic Biodiversity Congres



December 2-4, 2014 – Trondheim, Norway

The Circumpolar Biodiversity Monitoring Programme, Freshwater:

Short introduction to CBMP

By:

Tom Christensen
Arctic Research Centre,
Aarhus University,
Denmark

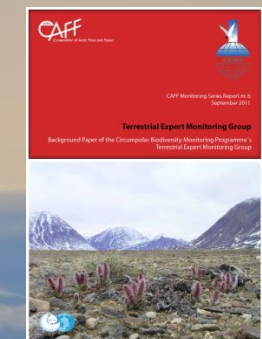
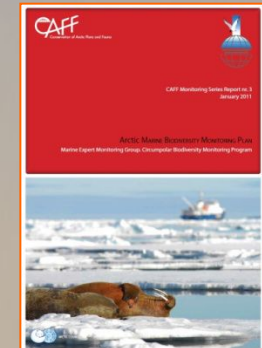


CBMP – in CAFF



CIRCUMPOLAR BIODIVERSITY MONITORING PROGRAM - Freshwater SG

- CAFF-CBMP and response to ACIA's recommendation to expand Arctic biodiversity monitoring and strengthen the information
- Bridging the information-policy gap; including reporting
- CBMP contains of four Expert Monitoring Groups (EMGs)/ Steering Groups (SG):
 - **Marine, Coastal, Freshwater, Terrestrial**
 - Ecosystem-based approach, network of networks
 - Forum for scientists and community experts (>100 experts involved)
 - 3 Pan-Arctic, integrated monitoring plans
- Four Year Strategic Plan direct the CBMP in the coming years

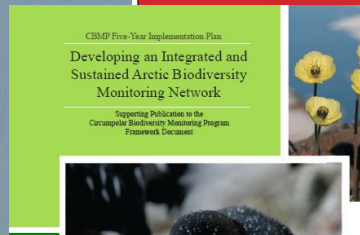


Four year Strategic Plan 2013–2017

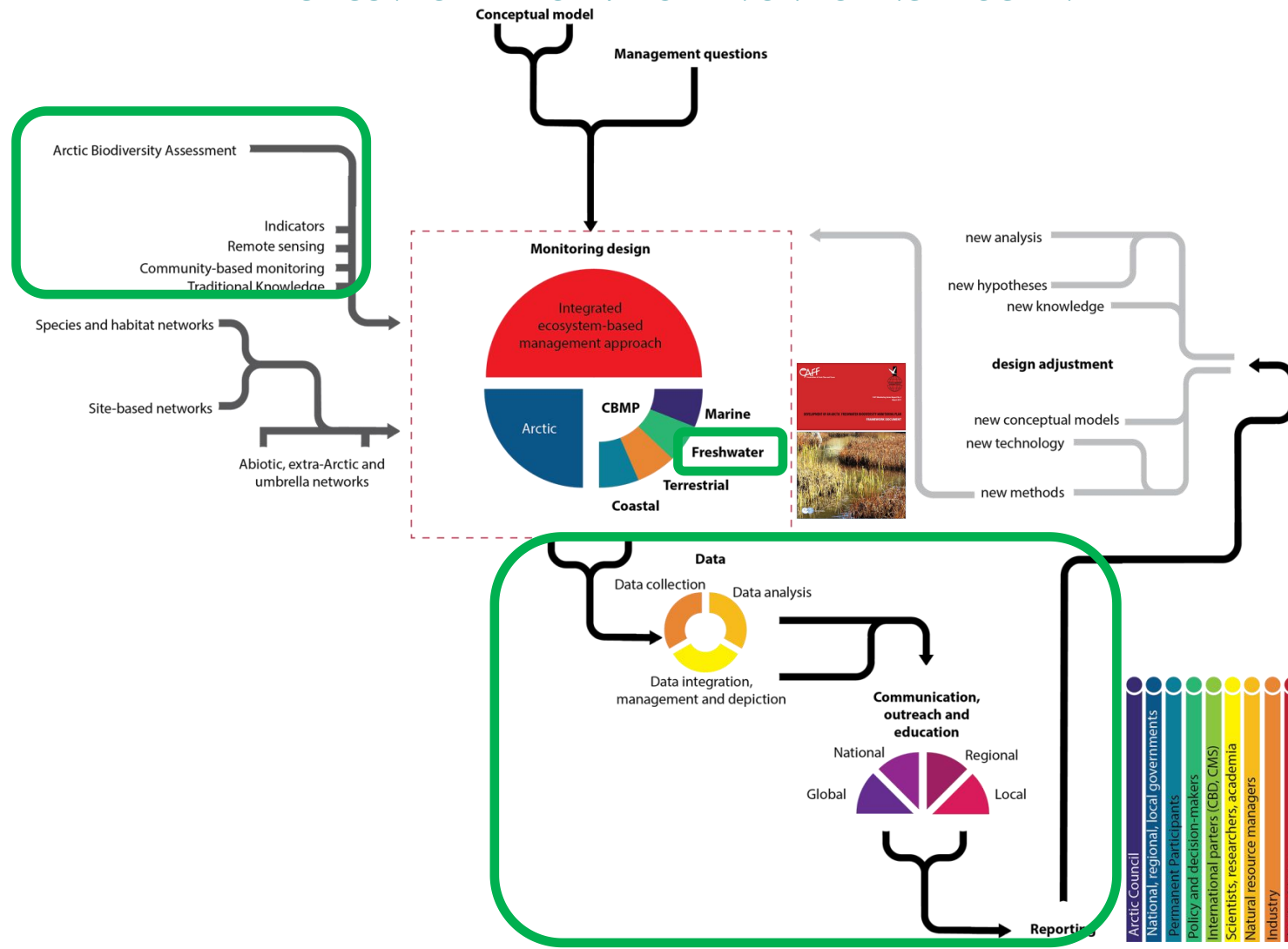


CIRCUMPOLAR BIODIVERSITY MONITORING PROGRAM - Freshwater SG

- Builds on the platform established by the CBMP 5-y implementation plan and the Arctic Biodiversity Assessment.
- Continued response to Arctic Council recommendations on biodiversity and ecosystem monitoring.
- Ensures integration of monitoring disciplines within CAFF.
- Profiling of freshwater monitoring up on regional and international scales.
- Focus on ABA implementation



CIRCUMPOLAR BIODIVERSITY MONITORING PROGRAM - Freshwater SG



A scenic landscape photograph featuring a body of water in the foreground. The water is calm, reflecting the surrounding greenery and a bright sun that is low on the horizon, creating a shimmering effect. Tall, slender green reeds or grasses grow densely in the water, their reflections clearly visible. In the background, a grassy field leads up to a hillside covered in dense, dark green vegetation. The overall atmosphere is peaceful and natural.

THANK YOU